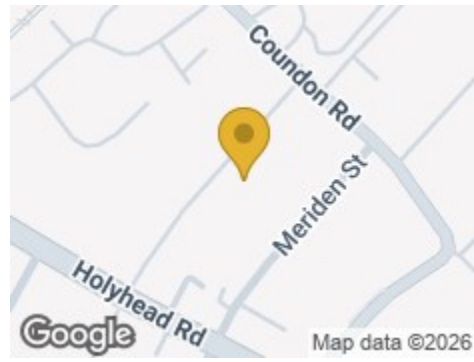


Road Map



Hybrid Map



Terrain Map



MATTHEW JAMES
Property Services



Floor Plan

22 CHESTER STREET
Approximate Gross Internal Area
1755 sq ft / 163.04 sq m



Although every attempt has been made to ensure accuracy, all measurements are approximate and no responsibility is taken for any error, omission, or mid-statement. This floor plan is for illustrative purposes only and not to scale. Measured in accordance to RICS standards.

22 Chester Street

Coundon, Coventry CV1 4DJ

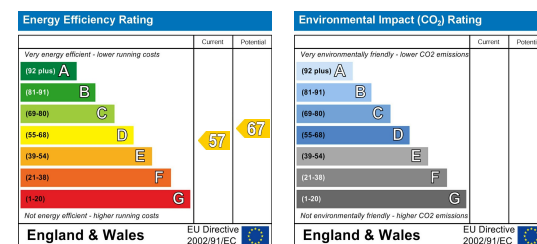
Offers Over £349,500



Viewing

Please contact us on 02477 170170 if you wish to arrange a viewing appointment for this property or require further information.

Energy Efficiency Graph



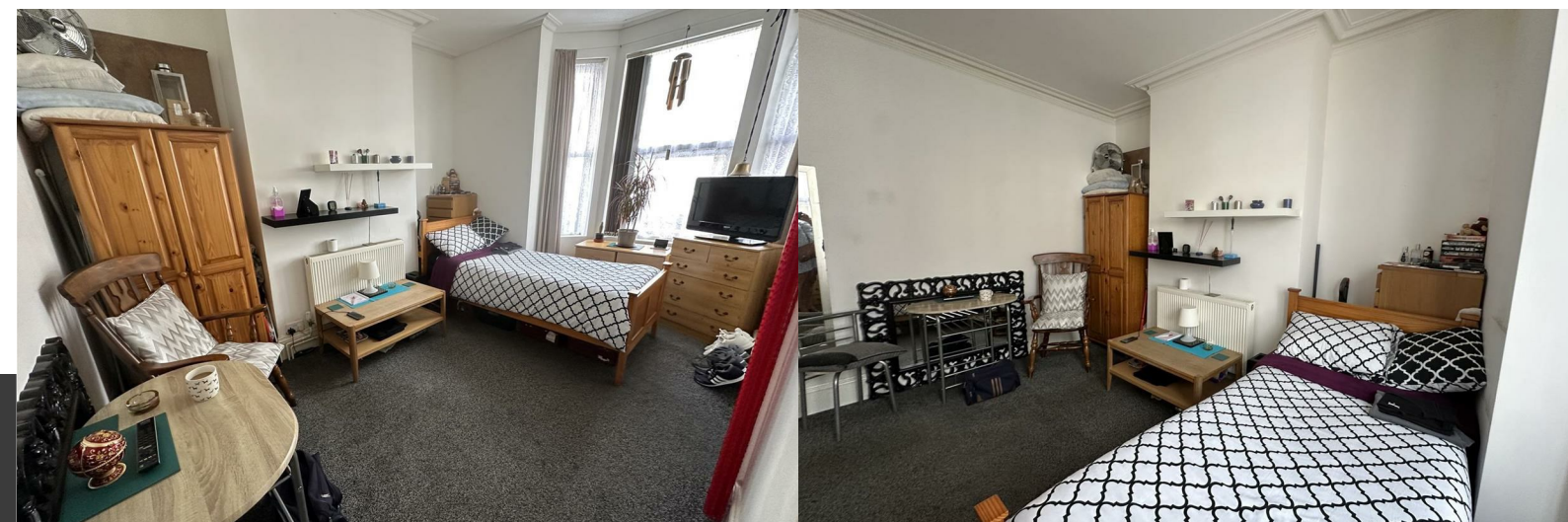
These particulars, whilst believed to be accurate are set out as a general outline only for guidance and do not constitute any part of an offer or contract. Intending purchasers should not rely on them as statements of representation of fact, but must satisfy themselves by inspection or otherwise as to their accuracy. No person in this firm's employment has the authority to make or give any representation or warranty in respect of the property.

CONTACT INFORMATION

24a Warwick Row, Coventry CV1 1EY
02477 170170

info@matthewjames.uk.com
www.matthewjames.uk.com

Facebook
Twitter



22 Chester Street

Coundon, Coventry CV1 4DJ

Offers Over £349,500



Studio One
14'9" x 9'10"

Studio Two
12'3" x 13'0"

Studio Three
16'11" x 10'5"

Studio Four
14'5" x 12'5"

Studio Five
12'5" x 9'10"

Studio Six
13'1" x 10'5"

Entrance hall

Landing

Lead up

Garden

Kitchen one

kitchen Two

Kitchen Three

Kitchen Four

Kitchen five

Kitchen six

Shower room one

Sower room two

Shower room four

Shower room five

Shower room six

